

RAYMOND WEIL S.A.

Avenue Eugène-Lance 36-38
P.O. Box 1569
1211 Geneva 26
Switzerland
Tel +41 (0) 22 884 00 55
Fax +41 (0) 22 884 00 50



GENERAL INFORMATION

info@raymond-weil.ch

AFTER SALES SERVICE

customer-service@raymond-weil.ch

WEBSITE

www.raymondweil.com

ZGU 718

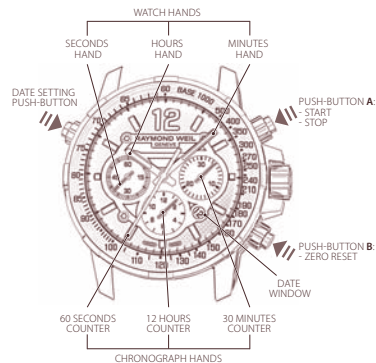


RAYMOND WEIL
GENEVE

INSTRUCTIONS FOR USE

NABUCCO
SELF-WINDING CHRONOGRAPH

NABUCCO CHRONOGRAPH DESCRIPTION OF THE DIAL AND BUTTON

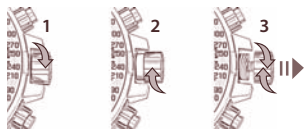


RAYMOND WEIL Nabucco chronograph is equipped with a tachymetric scale, enabling the measurement of speed in km/h.

Your watch is fitted with a screw-down crown. Before winding or adjusting the watch, it is therefore necessary to unscrew the crown by turning it anti-clockwise. The crown will then be released by a spring.

After adjusting settings, press the crown and gently turn it clockwise, and then screw it carefully down to maintain your watch's water-resistance.

SETTING THE TIME AND CHANGING THE DATE



- 1 Screw-down crown
- 2 Manual winding position
- 3 Time setting

Setting the Time

In order to adjust the time, unscrew the crown and pull-it out to position **3**. Turn it forwards or backwards until the hands indicate the desired time.

After setting the time, always push the crown back in to position **1**, in order to restart the hands and press lightly on the crown, while turning it clockwise, and screw it back in gently in order to preserve your watch's water-resistance.

Changing the Date



In order to adjust the date rapidly, press the date setting button until the required date appears in the window at 4:30.

The automatic date correction takes place as the hours hand passes midnight. During this operation, your watch will continue to function and so will not need to be reset.

NOTE: Do not change the date when the watch is showing a time between 10 p.m. and 2 a.m. The watch's automatic date-change mechanism engages during this time period and the movement could be damaged.

After completing these settings, press lightly on the crown, while turning it clockwise, and screw it back in gently in order to preserve your watch's water-resistance.

USE OF THE CHRONOGRAPH

The chronograph function can only be used when the crown is in position **1**.

Start

Press button **A** to activate the seconds hand of the chronograph. If the timed activity lasts longer than 60 seconds, the time elapsed will appear progressively on the minutes counter and on the hours counter.



Stop

Press push-button **A** a second time to stop the chronograph and obtain the time that has elapsed (in hours, minutes and seconds). By pressing button **A** again, timing is restarted immediately. Thus you can measure several consecutive time durations.



Resetting to Zero

After having stopped the chronograph by pushing on button **A**, press button **B** in order to reset all the chronograph counters to zero. Your watch is now ready to start timing again.

